

Welcome to Monkwood nature reserve



**Worcestershire
Wildlife Trust**

Monckewood was first mentioned in 1240 when it was owned by Worcester Priory, having been managed by monks for centuries. It is thought that what is now a 60 hectare wood, whose boundaries haven't changed for nearly 400 years, was once part of a much bigger woodland of Weogorena Leah, now the Wyre Forest.

Over time, the landscape around Monkwood has become fragmented and wildlife has declined. In 2022 we bought 24 hectares of land at neighbouring Green Farm to recreate the past landscape of orchards, wood pasture and wildflower-rich meadows surrounded by ancient woodland, reconnecting habitats and supporting many species for the future.

As you walk around this peaceful nature reserve you will discover more about the wildlife, history and management of this site. We hope you enjoy your visit.

Did you know..?

Up to 34 species of butterfly and over 850 species of moth have been recorded here. From spring to autumn, volunteers walk a designated route and count the number and species of butterfly seen to help monitor the populations.

Help protect wildlife

Thank you for helping to protect wildlife while you enjoy your visit by...

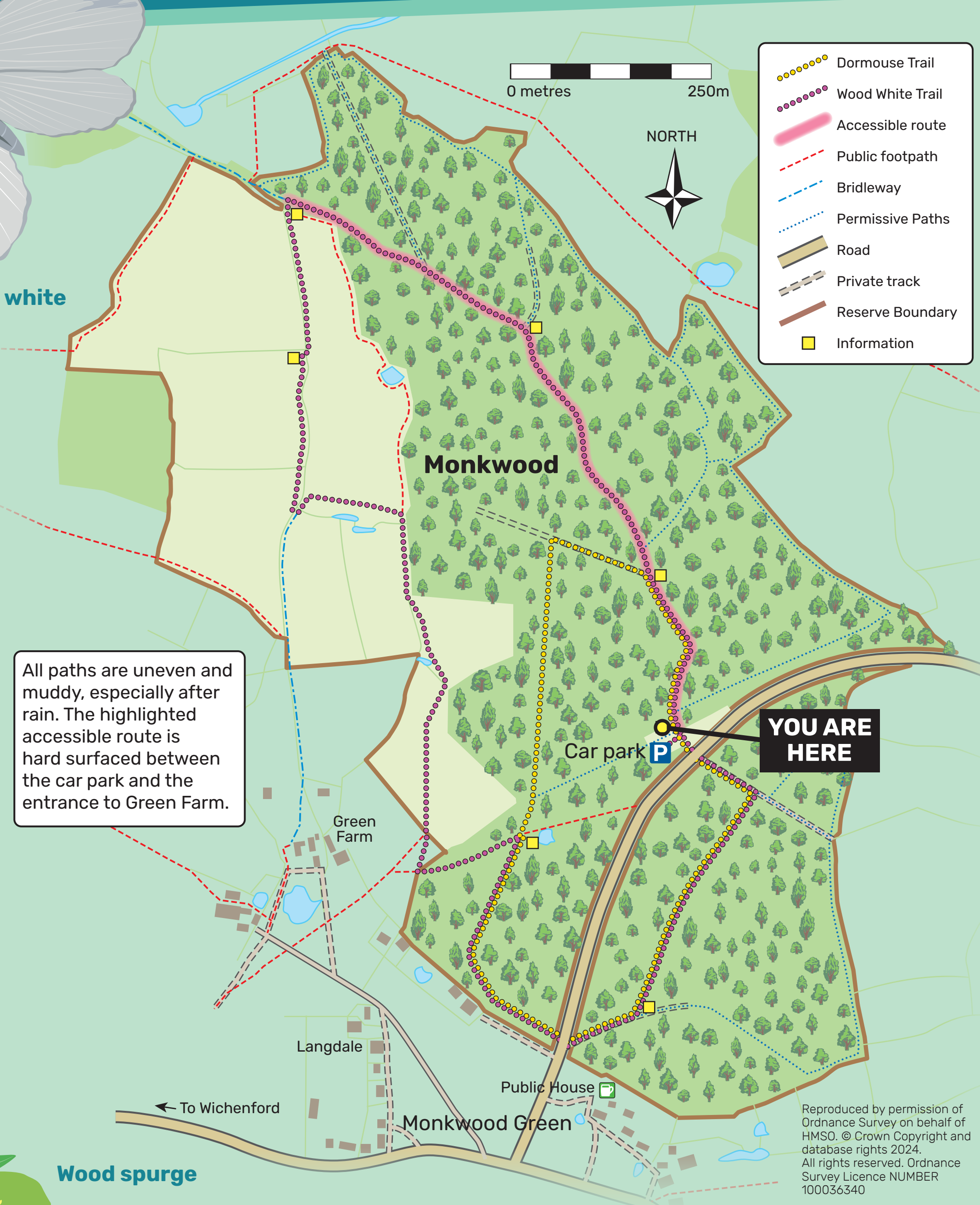
- keeping dogs on leads at all times and taking away their waste
- sticking to paths



Wood white



Wood spurge



Support us

We couldn't work to protect and conserve Worcestershire's fantastic wildlife and wild places without your help. Please support us by becoming a member, volunteering or donating.

Seasonal highlights



© Janet Packham

Spring: brimstone, drab looper, chiffchaff, great spotted woodpecker, wood spurge, wood anemone, cuckoo



© Jonathan Cartwright

Summer: aspen leaf-rolling weevil, wood white, white admiral, marsh tit, bugle, **southern hawker**



© Magnus McLeod

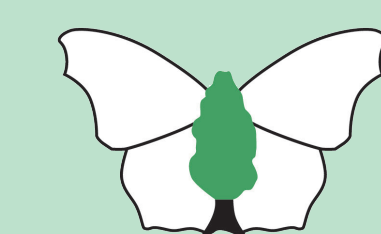
Autumn: slow-worm, dormouse, brown long-eared bat, common darter



© Sarah Fowle

Winter: nuthatch, **redpoll**, buzzard, red fox

Monkwood is jointly managed with Butterfly Conservation. Little Monkwood is co-owned by WWT and BC.



**Butterfly
Conservation**

Saving butterflies, moths and our environment



Heritage
Fund



severn
waste services

The purchase of land at Green Farm has been made possible by The National Lottery Heritage Fund, Severn Waste Services, The Banister Charitable Trust, 3dtotal.com Ltd, The LG Harris Charitable Trust, Esmée Fairbairn Foundation and generous donations from Trust members and supporters.

www.worcswildlifetrust.co.uk

Registered charity number 255618

Protecting wildlife where you live