

The Knapp and Papermill nature reserve



Worcestershire
Wildlife Trust



Marbled white butterfly

In the 19th century **Big Meadow** was known as Great Epiphany because its rent was due on Epiphany Day, 6th January. Hops and arable crops were grown here then and people from the Black Country and south Wales would arrive each summer to pick the hops. The meadow hasn't been ploughed for decades and more than 120 species of plants have reclaimed the space.

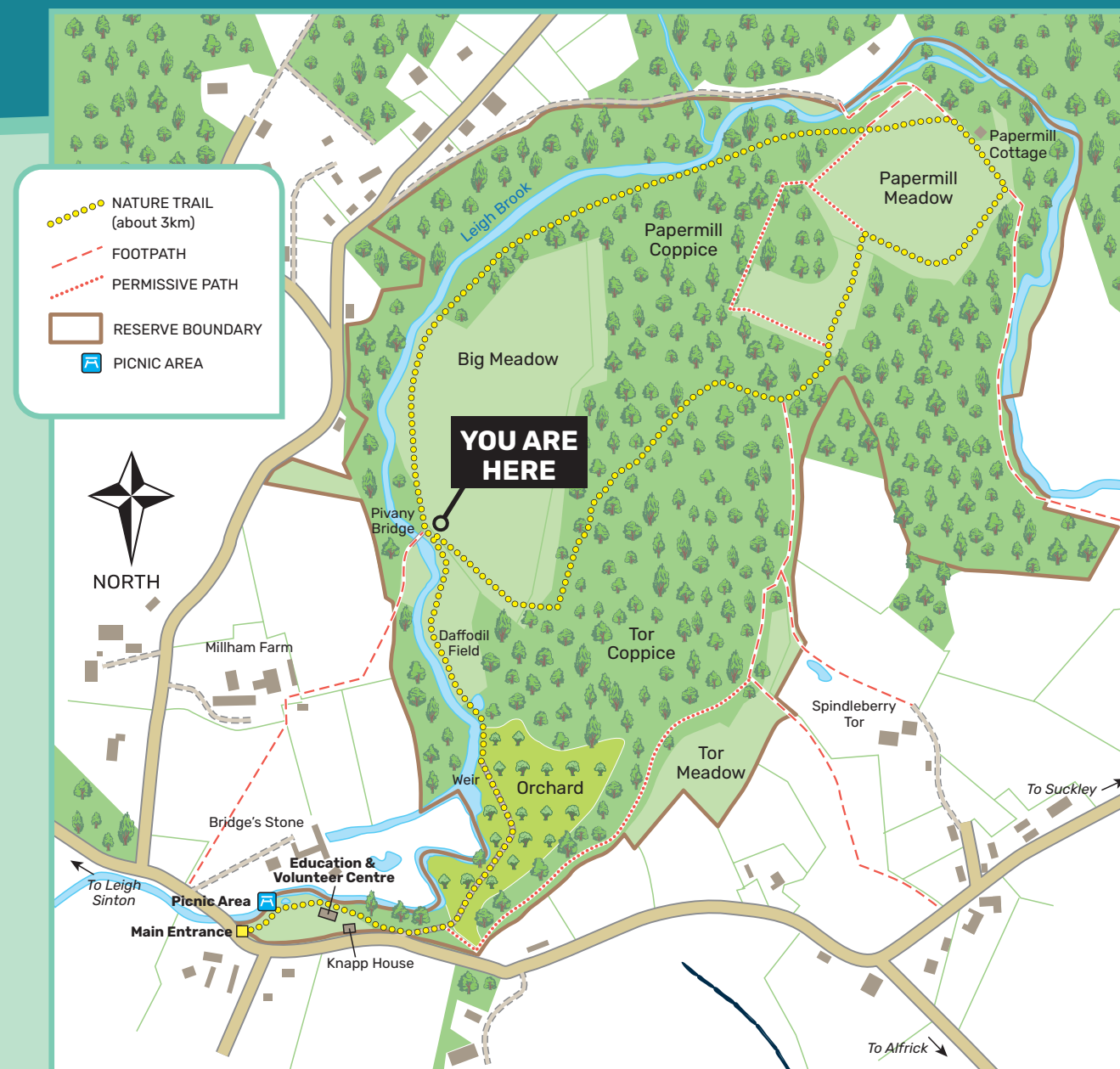
Our amazing human volunteers are joined by four-legged volunteers. Once flowers have set seed and the hay has been cut in late summer, livestock graze the meadow. They eat coarse grasses that would otherwise crowd out the delicate wildflowers.

We leave areas uncut, ensuring a lifeline for wildlife in late summer when other fields will have been mown.

Did you know?

More than 97% of wildflower-rich meadows have been lost since the 1940s. Whilst you may see thousands of orchids and other flowers here, they're rare elsewhere.

Green-winged orchid

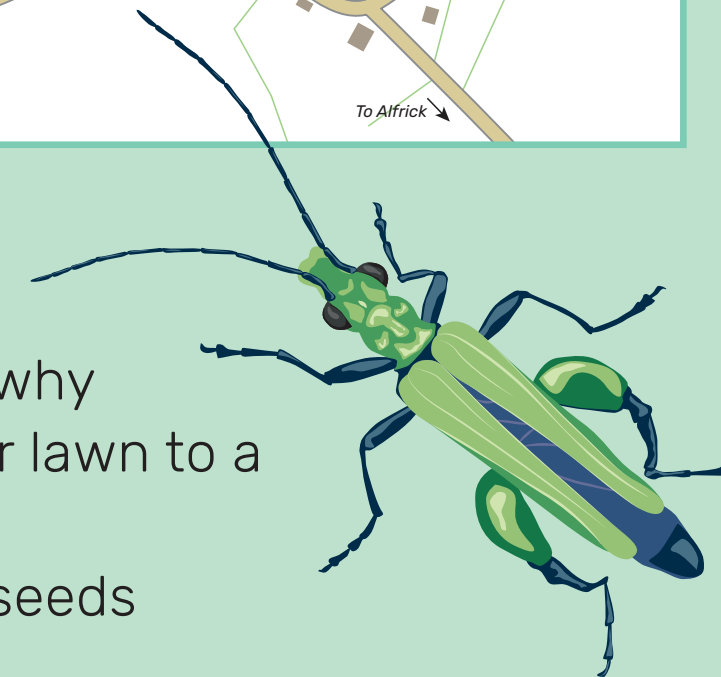


Try this at home!

If you've got a garden, why not convert part of your lawn to a mini meadow?

- Buy some wildflower seeds
- Rake over the area
- Sprinkle the seeds in late summer and water in
- Don't mow until late summer the following year, after your flowers have set seed

Search for mini meadow on
www.worcswildlifetrust.co.uk



Thick-thighed
flower beetle

Seasonal highlights

SPRING:

Cowslip, green-winged orchid, cuckoo flower, **orange tip butterfly**, damson, flower, mole, blackcap



© Paul Manning



© Carl Graef

SUMMER:

Common spotted orchid, ox-eye daisy, **knapweed**, bird's-foot trefoil, fox, red-tailed bumblebee, **common blue butterfly**



© Rosemary Winnall



© Pete Cheshire

Mind your step

Big Meadow is full of delicate wildflowers that can take a long time to recover if trampled. Just like you, we marvel at its beauty but ask you please to stick to the path and avoid temptation to step amongst the flowers for the perfect photo. *Thank you.*