

Southeast Worcestershire Local Group

Winter 2023 News



Worcestershire
Wildlife Trust

Hello!

Your local group is up and running once again and we'd like to thank the previous committee for all their hard work in running events and keeping you informed about wildlife in our beautiful corner of southeast Worcestershire. We hope to get to know you and, in the meantime, you can find out a little more about your new committee members below.

We've organised talks for the New Year (see over) and very much look forward to meeting you. If you would like to get involved with your new committee, please drop us a line nick-rose01@btinternet.com

John Boon & Nick Rose

New beginnings.....

I moved to Evesham almost exactly six years ago having spent all my previous 70 years in Plymouth. During that time, I had come to enjoy and appreciate the coasts and estuaries of Devon and the rugged landscape of Dartmoor. So, what wildlife interest would inland Worcestershire provide? As it turned out, more than I could have imagined.

Almost immediately I joined Worcestershire Wildlife Trust and my local u3a (University of the Third Age) Birdwatching Group where my first meeting was to one the Trust's flagship reserves, Upton Warren. Rereading my notes from that day, I see that I recorded the highlights as avocets, little ringed plovers and a water rail. I have returned to Upton Warren many times since and it never disappoints, whatever the season.

I have seen brown hairstreak butterflies at Grafton Wood and white admiral butterflies at Monkwood, dozens of shaded broad-bar moths and a six-belted clearwing moth at Windmill Hill as well as flowers and hoverflies galore at Tiddesley Wood.



Six-belted clearwing by John Boon

I quickly discovered there is so much wildlife to see in Worcestershire. I hope you will be able to join us on our outdoor meetings when we will be visiting some of the Trust's reserves mentioned above as well as other places of nature interest within the county.

So, Devon or Worcestershire? It's probably best not to compare. Both counties have so much to offer. I do occasionally miss the sea but Worcestershire is now my home and gives me so much to enjoy - wandering along the banks of the Avon, taking in the view of the Vale from Fish Hill and most of all its wildlife, more than I could have imagined!

John

Green shoots of recovery

As a new volunteer with Worcestershire Wildlife Trust and member of the re-forming Southeast Local Group committee, I have been greatly encouraged by the support offered by the team based at Lower Smite Farm. The many aspects of the Trust's activities will provide a rich resource from which the committee intends to develop a regular programme of evening meetings and outdoor events in our area. The new and still developing committee, whilst small, has diverse interests and is keen to reach out across southeast Worcestershire so that we can share and enjoy our common interest in wildlife, the environment and its wellbeing.

On Wednesday December 13th there will be an initial meeting at The Friends Meeting House in Evesham, which will include a short presentation from a member of the Trust's team about the work of the Trust across our area. This will be followed by light refreshments and a chance to share your thoughts and ideas for the future. We hope to build a diverse and inclusive programme for all ages and interests without losing the spirit that has gone before and have started to develop an outline programme for early next year. We intend to meet on a regular basis, hopefully rotating meeting venues between Evesham, Pershore and, perhaps, Broadway.

We are pleased to be able to announce the following evening talks...

Wed 13th December

The work of Worcestershire Wildlife Trust & opportunity to meet your new committee

Wed 10th January

Gary Farmer: The Vale Landscape Heritage Trust

Wed 14th February

Jeff Steady: Nature in Colour—Photographing Wildlife

For now, all meetings will take place at The Friends Meeting House, Cowl Street, Evesham WR11 4PN. There is plenty of parking on nearby Oat Street car park. Entrance is £2.50.

If you would like more details about our plans for the coming months or have suggestions for future meetings, please contact Nick Rose nickrose01@btinternet.com We look forward to meeting you on the 13th December and at future meetings and events.

John

A garden invader

In 2007 a box tree moth *Cydalima perspectalis* was found in Kent, the first record for the UK. Since then it has been gradually increasing in range and numbers. This striking moth originated from southeast Asia and has been accidentally introduced to this country. It is usually cream with brown edges to the wings,

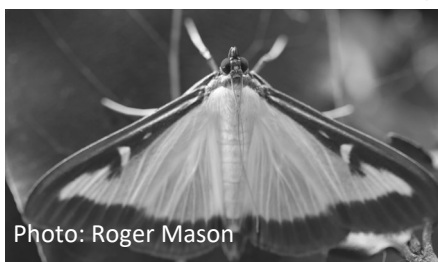


Photo: Roger Mason

although there is a variant that is all brown with white spots on the wings. It has a wingspan of 4 to 4.5cm.

had been 119 records but numbers have increased considerably this year. On one night alone in early September I recorded 15 in my small Evesham garden.

These records are important, not just for the numbers of adult moths, but also because they represent the amount of damage the larvae can cause to both native and decorative box. The caterpillars are greenish yellow in colour with thick black and white stripes along the body. They eat box leaves and produce webbing to cover the areas where they are feeding. You can find further information and report sightings of these invaders via www.worcswildlifetrust.co.uk/wildlife-sightings

It was first recorded in Worcestershire in Malvern in July 2017. To the end of 2022 there