



Worcestershire
Wildlife Trust

Southeast Worcestershire Local Group

Your local news, winter 2022

Lines of woodpecker peckings in the bark of lime trees

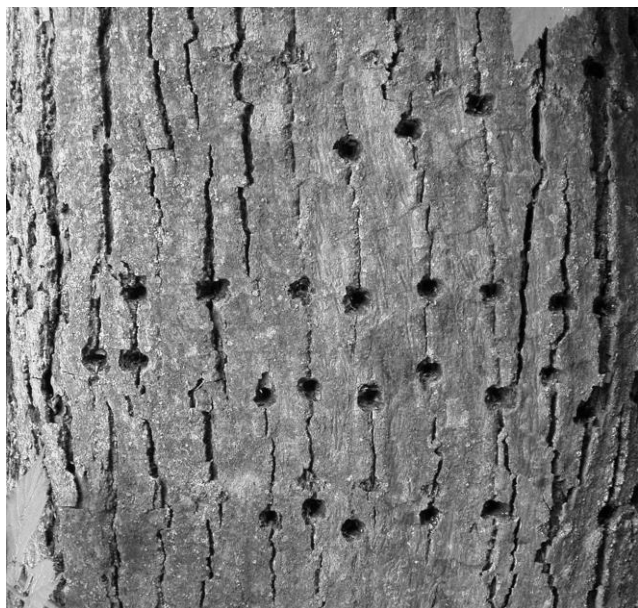


Photo: Harry Green

If you look carefully at some small-leaved lime trees you may see horizontal lines of holes in the bark. Some trees show thousands, other just a few. They are made by great spotted woodpeckers and usually in the spring. Nobody knows for sure why they do it. Possibly the holes may bleed sap and provide a drink. Some very small flies lay eggs in some holes and the larvae live in the holes, creating a bigger blemish in or just below the bark, so perhaps a woodpecker returns to the holes for food later in the summer. Perhaps it is an inherited habit similar to the sap-sucking of some North American woodpeckers and wasted here. I have been interested in this for many years and would like to hear of any instance of this behaviour that you may see, together with a photo. If you are so lucky and you see a woodpecker doing it and you can catch it on video that would be a first and wonderful. In 50 years I have only seen a spring great spot actually doing it and that was high in a tree and long ago. Hope to hear from you.

Harry Green

Tiddesley Wood Logs & Woodchip Sales

Remaining sale dates for this season

Sat & Sun 3rd & 4th December 2022

Sat & Sun 7th & 8th January 2023

Sat & Sun 4th & 5th February 2023

10am to 1pm each day

Logs £7 a bag

Loose without bags £140 per cu metre,
loaded loose into trailers, car boots etc -
any amount

Wood chips if available £3 a bag – none available at present, please check website for updates or e-mail logsales@tiddesley.org.uk

DIRECTIONS

Follow main road (B4084) out of Pershore towards Worcester. Turn left at top of Allesborough Hill following signposts to Besford & Croome. After c500 yds look for signs. WR10 2AD will get you near for Sat Navs. What3words quits.acrobats.lease

Our February 2023 log sales will be the last. We regret that loyal and regular customers will need to find new suppliers in 2023 and want to thank you all for your custom and support over the years. Your purchases have helped us to continue our conservation work across the county but we are reaching a stage where costs outweigh benefits.

If you are coming along to one of our February log sales, please check our website to make sure that stock is still available

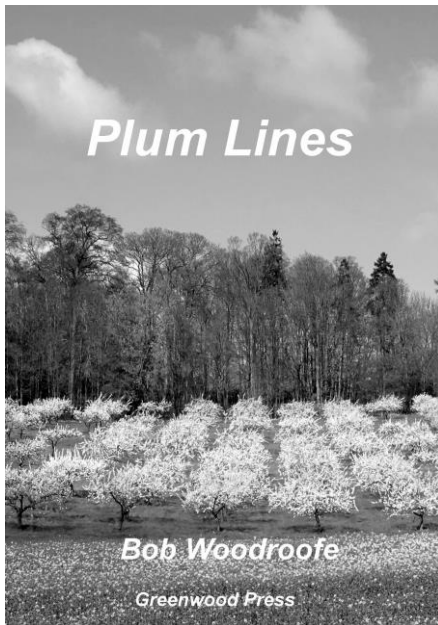
Home delivery of logs

Our volunteer John Holder is able to make some local deliveries of logs. There will be a delivery charge. If you are interested please contact John on 07583 907636. We cannot promise to meet every request and whether or not a delivery can be made is entirely at his discretion.

Volunteers!

The log sales are run entirely by volunteers. We are always very pleased to welcome new helpers. Log sales certainly give you plenty of exercise stuffing logs into bags or loading them into trailers! If you would like to join the happy gang please contact either Harry Green 01386 710377 email zen130501@zen.co.uk or Bob Gillmor 01386 556685 email robert.gillmor@btinternet.com for more information.

Plum Lines – Poetry from the Vale of Evesham and beyond



Evesham poet Bob Woodroffe's latest publication contains a diverse collection of poems created from a variety of stimuli over the years. It includes poems about nature and the seasons in the Vale of Evesham. There are also poems about family, the pandemic, Evesham dialect poems and others inspired by myth and legend.

The 64 page hardback book is priced at £10 + £1.50 p&p and was published in April 2022.

Plum Lines completes a trilogy of Vale of Evesham-based poetry books. The previous books in the series are:

Pick of the Crop – published 2017

Another Lad of Evesham Vale – published 2020

Extract from 'Plum Lines'

First Prolifics, then Yellow Eggs,
next the Czars, then Purple Pershores.
The main crop, sweet Victorias,
then the Damsons, all done at last.

Extract from 'We Wait'

for crescent specks to scythe across sky
sickle winged silhouettes the anchor
that flies drops through blue ether

Bob always says he hopes he will be discovered & appreciated in 200 years time, just like John Clare was.

For further details:

bob.woodroffe@outlook.com

www.greenwoodpress.co.uk

38, Birch Avenue, Evesham, Worcs. WR11 1YJ

01386 446477

The "Moth of the Year"?

After a morning meeting at Trust HQ in August, there was great excitement by Worcestershire Biological Records Centre office; I was introduced to my first hummingbird hawk-moth *Macroglossum stellatorum*. It was hovering to take nectar on red valerian. In flight these are absolute stunners, an inch or so long with the orange hind wings showing (but very easily missed when resting as they are grey/brown). The name comes from their similarity in appearance to (you've already worked it out...) hummingbirds. My Avon Meadows colleague Ken sent me a picture of one at rest in his conservatory in Evesham and I later saw one in Pershore. John Holder mentioned a number in his Eckington garden. There do seem to have been a lot around this year.



Photo: Wendy Carter

They are quite common but I had never seen one before – a day-flying moth that is a migrant and probable resident. Flying during the day and acting rather like a bee it should be no surprise that I had not seen one in my moth trap! The Trust are asking for sightings – have you photographed one?

www.worcswildlifetrust.co.uk/wildlife-sightings

Bob Gillmor

Website

Take a look at our new SEW Local Group website, it can be found at www.tiddesley.org.uk Events and log sale information can also be found on the Trust's main website www.worcswildlifetrust.co.uk

We are looking for a volunteer who can help maintain our local group website, if you would like to help out with this please contact our webmaster Bob Gillmor tel 01386 556685 or email robert.gillmor@btinternet.com.

Local Group Contacts

Useful phone numbers and your local committee:

Harry Green 01386 710377 (Chairman, Tiddesley Wood, log sales, work parties, general information, etc). Bob Gillmor 01386 556685 (Treasurer and log sales organiser). Liz Stone, Jayne Bache, John Holder & Pam Holder (log deliveries), Sue Chandler (bird food and Christmas card sales), Janet Morris (organiser indoor events). Newsletter edited and stuck together by Jayne Bache.